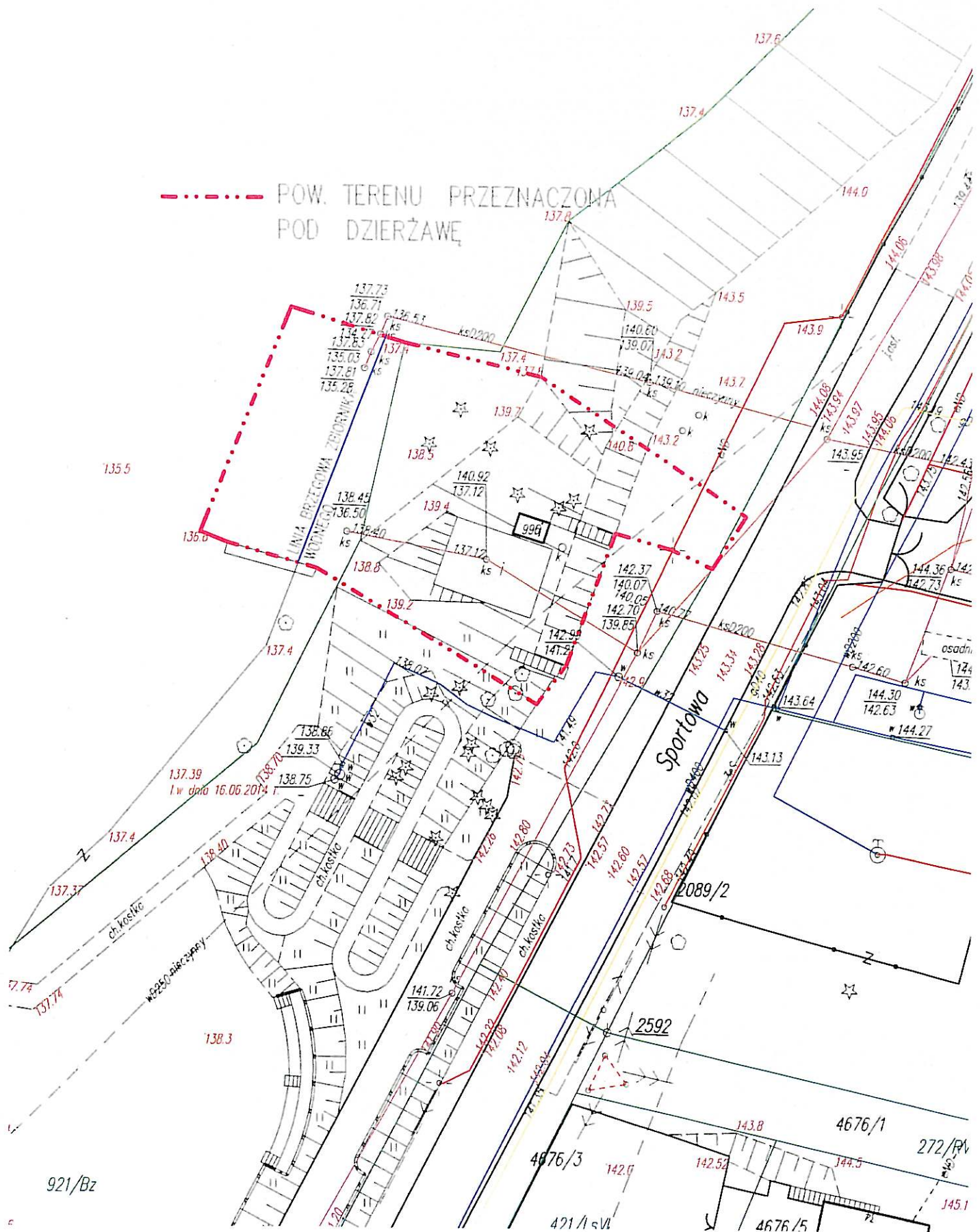


Załącznik nr 1 do ogłoszenia o przetargu



projektant nr 2 do dyskusji
p. 100/100

141.8
141.2
140.7
139.4
138.7
137.3
136.4
135.5
134.2
133.2
132.4
131.4
130.4
129.4
128.4
127.4
126.4
125.4
124.4
123.4
122.4
121.4
120.4
119.4
118.4
117.4
116.4
115.4
114.4
113.4
112.4
111.4
110.4
109.4
108.4
107.4
106.4
105.4
104.4
103.4
102.4
101.4
100.4
99.4
98.4
97.4
96.4
95.4
94.4
93.4
92.4
91.4
90.4
89.4
88.4
87.4
86.4
85.4
84.4
83.4
82.4
81.4
80.4
79.4
78.4
77.4
76.4
75.4
74.4
73.4
72.4
71.4
70.4
69.4
68.4
67.4
66.4
65.4
64.4
63.4
62.4
61.4
60.4
59.4
58.4
57.4
56.4
55.4
54.4
53.4
52.4
51.4
50.4
49.4
48.4
47.4
46.4
45.4
44.4
43.4
42.4
41.4
40.4
39.4
38.4
37.4
36.4
35.4
34.4
33.4
32.4
31.4
30.4
29.4
28.4
27.4
26.4
25.4
24.4
23.4
22.4
21.4
20.4
19.4
18.4
17.4
16.4
15.4
14.4
13.4
12.4
11.4
10.4
9.4
8.4
7.4
6.4
5.4
4.4
3.4
2.4
1.4
0.4
0.0
-0.4
-0.8
-1.2
-1.6
-2.0
-2.4
-2.8
-3.2
-3.6
-4.0
-4.4
-4.8
-5.2
-5.6
-6.0
-6.4
-6.8
-7.2
-7.6
-8.0
-8.4
-8.8
-9.2
-9.6
-10.0
-10.4
-10.8
-11.2
-11.6
-12.0
-12.4
-12.8
-13.2
-13.6
-14.0
-14.4
-14.8
-15.2
-15.6
-16.0
-16.4
-16.8
-17.2
-17.6
-18.0
-18.4
-18.8
-19.2
-19.6
-20.0
-20.4
-20.8
-21.2
-21.6
-22.0
-22.4
-22.8
-23.2
-23.6
-24.0
-24.4
-24.8
-25.2
-25.6
-26.0
-26.4
-26.8
-27.2
-27.6
-28.0
-28.4
-28.8
-29.2
-29.6
-30.0
-30.4
-30.8
-31.2
-31.6
-32.0
-32.4
-32.8
-33.2
-33.6
-34.0
-34.4
-34.8
-35.2
-35.6
-36.0
-36.4
-36.8
-37.2
-37.6
-38.0
-38.4
-38.8
-39.2
-39.6
-40.0
-40.4
-40.8
-41.2
-41.6
-42.0
-42.4
-42.8
-43.2
-43.6
-44.0
-44.4
-44.8
-45.2
-45.6
-46.0
-46.4
-46.8
-47.2
-47.6
-48.0
-48.4
-48.8
-49.2
-49.6
-50.0
-50.4
-50.8
-51.2
-51.6
-52.0
-52.4
-52.8
-53.2
-53.6
-54.0
-54.4
-54.8
-55.2
-55.6
-56.0
-56.4
-56.8
-57.2
-57.6
-58.0
-58.4
-58.8
-59.2
-59.6
-60.0
-60.4
-60.8
-61.2
-61.6
-62.0
-62.4
-62.8
-63.2
-63.6
-64.0
-64.4
-64.8
-65.2
-65.6
-66.0
-66.4
-66.8
-67.2
-67.6
-68.0
-68.4
-68.8
-69.2
-69.6
-70.0
-70.4
-70.8
-71.2
-71.6
-72.0
-72.4
-72.8
-73.2
-73.6
-74.0
-74.4
-74.8
-75.2
-75.6
-76.0
-76.4
-76.8
-77.2
-77.6
-78.0
-78.4
-78.8
-79.2
-79.6
-80.0
-80.4
-80.8
-81.2
-81.6
-82.0
-82.4
-82.8
-83.2
-83.6
-84.0
-84.4
-84.8
-85.2
-85.6
-86.0
-86.4
-86.8
-87.2
-87.6
-88.0
-88.4
-88.8
-89.2
-89.6
-90.0
-90.4
-90.8
-91.2
-91.6
-92.0
-92.4
-92.8
-93.2
-93.6
-94.0
-94.4
-94.8
-95.2
-95.6
-96.0
-96.4
-96.8
-97.2
-97.6
-98.0
-98.4
-98.8
-99.2
-99.6
-100.0
-100.4
-100.8
-101.2
-101.6
-102.0
-102.4
-102.8
-103.2
-103.6
-104.0
-104.4
-104.8
-105.2
-105.6
-106.0
-106.4
-106.8
-107.2
-107.6
-108.0
-108.4
-108.8
-109.2
-109.6
-110.0
-110.4
-110.8
-111.2
-111.6
-112.0
-112.4
-112.8
-113.2
-113.6
-114.0
-114.4
-114.8
-115.2
-115.6
-116.0
-116.4
-116.8
-117.2
-117.6
-118.0
-118.4
-118.8
-119.2
-119.6
-120.0
-120.4
-120.8
-121.2
-121.6
-122.0
-122.4
-122.8
-123.2
-123.6
-124.0
-124.4
-124.8
-125.2
-125.6
-126.0
-126.4
-126.8
-127.2
-127.6
-128.0
-128.4
-128.8
-129.2
-129.6
-130.0
-130.4
-130.8
-131.2
-131.6
-132.0
-132.4
-132.8
-133.2
-133.6
-134.0
-134.4
-134.8
-135.2
-135.6
-136.0
-136.4
-136.8
-137.2
-137.6
-138.0
-138.4
-138.8
-139.2
-139.6
-140.0
-140.4
-140.8
-141.2
-141.6
-142.0
-142.4
-142.8
-143.2
-143.6
-144.0
-144.4
-144.8
-145.2
-145.6
-146.0
-146.4
-146.8
-147.2
-147.6
-148.0
-148.4
-148.8
-149.2
-149.6
-150.0
-150.4
-150.8
-151.2
-151.6
-152.0
-152.4
-152.8
-153.2
-153.6
-154.0
-154.4
-154.8
-155.2
-155.6
-156.0
-156.4
-156.8
-157.2
-157.6
-158.0
-158.4
-158.8
-159.2
-159.6
-160.0
-160.4
-160.8
-161.2
-161.6
-162.0
-162.4
-162.8
-163.2
-163.6
-164.0
-164.4
-164.8
-165.2
-1

POW. TERN

PRZEMOŹNIANY POD DZIERŻAWĘ

PO UZGODNIENIU WYBRANEJ LOKALIZACJI